



**TITANIUM COBRA**  
SOLUTIONS

Titanium Cobra Solutions was commissioned in 2010 and is headquartered in San Diego, CA with four satellite locations in Washington, DC, Arlington, VA, New Orleans, LA, and Boston, MA. Our dedicated staff and project oriented organizational philosophy have a proven record of delivering client products and services on-time, within budget, and many times exceeding our client's expectations for quality.

Our specialty is delivering project management services, IT systems engineering solutions, strategic business process optimization, and customized training solutions to both Government and commercial clients.



Titanium Cobra Solutions is a Department of Veteran Affairs CVE program Certified Service-Disabled Veteran-Owned Small Business (SDVOSB) and California Department of General Services Certified Disabled Veteran Business Enterprise (DVBE) and Micro Business [REG # 1752383]



TITANIUM COBRA SOLUTIONS has a successful history of supporting the Project Management community, Industry and Government Leaders, and Top organizations in building solid solutions leveraging project management principals. Over 40% of our company staff have earned their PMP or CSM credentials and are leaders in their industry fields.

### OUR SPECIALTY

1. **Project Rescue** – We visit a client site and assess the overall health of a project; project review, forensic analysis, task execution, mitigation strategies, and other critical elements resulting in an unbiased evaluation of the program management performance and recommendations for recovery.

**Program Management Office** – We work with our clients to develop a PMO implementation plan that will be successful in their organization by conducting climate surveys, change management strategies, operational templates and other PMO Framework elements provided in Figure 1.

**Risk** – Our Team of PM professionals are experienced in a variety of industries and can offer Risk consultation and assist with implementing risk assessment strategies, software solutions, and general practice considerations essential to effectively executing mid to large scale projects.

**Scheduling** – As a service, our team of experience schedulers are available to assist clients in building out a project schedule using leading technology tools and industry best practices, working with project leadership to incorporate achievable work breakdown structures, and factoring in mitigation strategies.

**Agile** – Our staff of Certified Scrum Masters are available to assist development team in establishing structure and routine, assessing backlogs, evaluating sprints, and providing direction to teams in need of a motivational boost. Emphasis on both traditional Agile and PM Hybrid Agile practices.

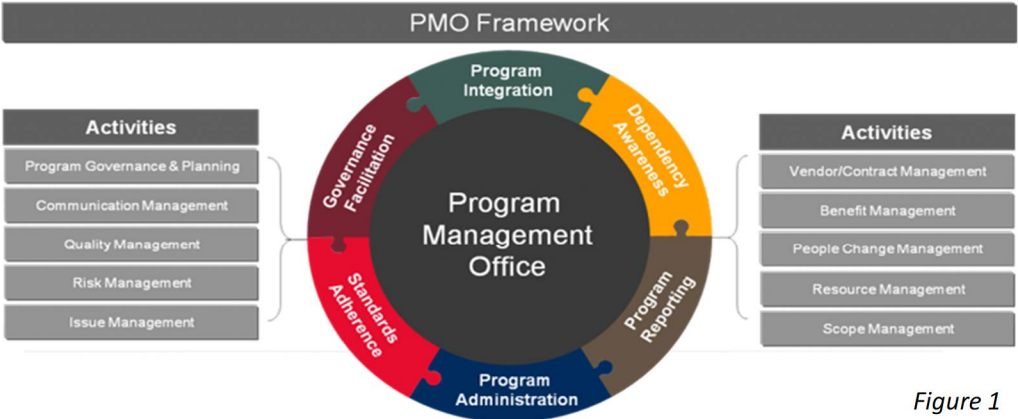
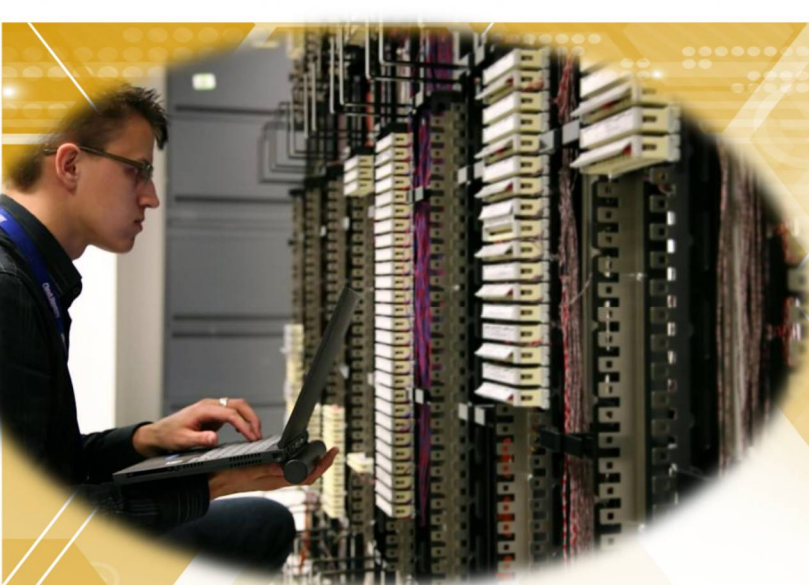


Figure 1





DATA MANAGEMENT | IT ARCHITECTURE | CLOUD | COMMUNICATIONS | MOBILE DEVICE | REFRESH

Data Center	IT Architecture	Enterprise Integrated Communications
<ul style="list-style-type: none"> <li>Consolidation</li> <li>Application consolidation, migration and hosting</li> <li>Shared collaboration services</li> <li>Storage management</li> </ul>	<ul style="list-style-type: none"> <li>Planning</li> <li>Designing</li> <li>Security</li> <li>Modernization</li> <li>Performance</li> </ul>	<ul style="list-style-type: none"> <li>Voice over IP(VoIP)</li> <li>Audio and Web conferencing</li> <li>Wireless</li> <li>PBX</li> <li>Instant messaging</li> </ul>
Cloud & Virtualization	Mobile Device	Tech Refresh & Network Services
<ul style="list-style-type: none"> <li>Consulting</li> <li>Integration</li> <li>Design, migrate and hosting</li> <li>Snapshotting</li> <li>Failover</li> <li>Desktop virtualization</li> <li>Application virtualization</li> </ul>	<ul style="list-style-type: none"> <li>Over the air updates</li> <li>Mobile phones</li> <li>Tablets</li> <li>Ruggedized mobile CPUs</li> <li>Mobile POS device</li> </ul>	<ul style="list-style-type: none"> <li>Hardware inventories</li> <li>Warranties</li> <li>Upgrades</li> <li>Salvaging</li> <li>Helpdesk services</li> <li>Desktop services</li> <li>Fault management</li> <li>Ticketing System</li> </ul>

**Project Highlight:** *Data Center Consolidation*

**Project Highlight:** *Program Executive Office Enterprise Information Systems*





CYBER SECURITY | INFORMATION ASSURANCE | NETWORK SERVICES | ENTERPRISE ARCHITECTURE

CYBER SECURITY		
<ul style="list-style-type: none"><li>• <b>Advisory</b> - Cyber Security Advisory Services utilize security standards (FISMA, ISO, FedRAMP, NIST and others) to measure risk within your enterprise with the following:<ul style="list-style-type: none"><li>• Assessments</li><li>• Risk</li><li>• Independent validation and verification</li><li>• Evaluations</li><li>• Baselines and standards</li><li>• Audits</li><li>• Compliance</li></ul></li></ul>	<ul style="list-style-type: none"><li>• <b>Consulting</b> - Cyber Security Consulting Services assist organizations with the implementation, integration and remediation of equipment, applications, infrastructure and systems that help protect the enterprise:<ul style="list-style-type: none"><li>• Architecture</li><li>• Engineering</li><li>• Installation, configuration and integration</li><li>• Program Development</li><li>• Data and System Categorization</li></ul></li></ul>	<ul style="list-style-type: none"><li>• <b>Operations</b> - Cyber Security Operations Services support and maintain the security posture of our client enterprise on a continual basis with:<ul style="list-style-type: none"><li>• Security Operations Center (Monitoring and Management)</li><li>• Incident Response</li><li>• Information Assurance</li><li>• Data Loss Presentation and Protection</li><li>• Managed Services</li><li>• System</li><li>• Devices</li><li>• Applications</li></ul></li></ul>

**Project Highlight:** *Program Executive Office Enterprise Information Systems*

**Project Highlight:** *PMW-240, Sea Warrior*





Our management consulting services focus on our clients' most critical issues and opportunities: strategy, marketing, organization, operations, technology, transformation, digital, advanced analytics, corporate finance, and sustainability across all industries and geographies. We bring deep, functional expertise, but are known for our holistic perspective: we capture value across organization.

---

## Focus Areas:

**Organization Diagnostics:** Titanium Cobra's diagnostic processes and tools help clients assess and identify how to improve their organizational performance. It helps companies determine where their organization is strong, where it is weak and, most critically, which outcomes matter most for generating superior business performance.

**Change management.** Change is tough and always has been. Organizational change is a particularly emotional process—often a source of tension and insecurity. "Will I still have a job?" "What will it be?" We help companies account for these sensitivities with clear communications and solid engagement plans to motivate people. Our approach draws from experiential learning about what actions make change stick. We help deliver "quick wins" by anchoring change in customer and marketplace needs and by tackling changes in parallel, and enduring success by building organization alignment and avoiding ambiguity around critical roles and decision processes.

**Organizational design and operating model.** A well-designed operating model provides a clear and consistent blueprint for how resources are organized and operated to achieve a company's strategic priorities. We partner with clients to help them design and implement operating models that translate strategy into effective execution.

**Lean Six Sigma:** Reap the benefits of faster processes with lower waste and higher qualities.

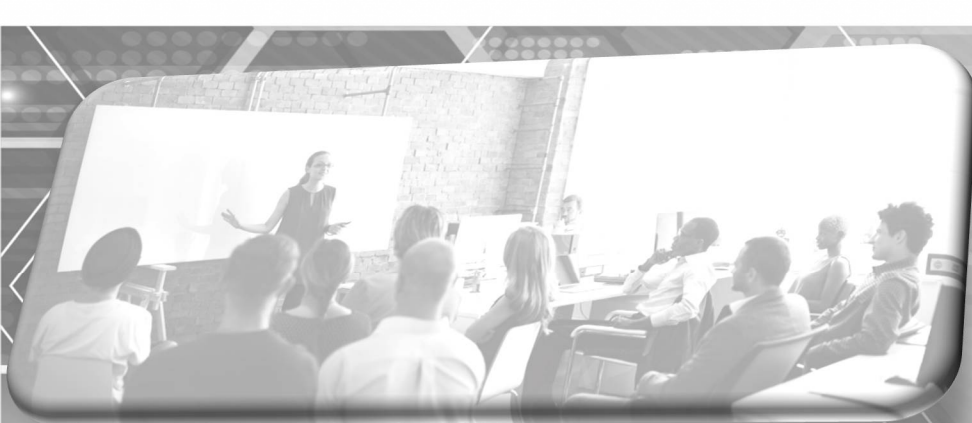
**Marketing and brand strategy:** We help companies align marketing and brand strategy with overarching business objectives; ensure marketing investments are generating highest returns and reinforcing the brand positioning; and build a loyal customer base through branding that cultivates a strong, trusted image.

---

**Project Highlight:** *Program Executive Office Enterprise Information Systems*

---





**Project Highlight:** *California State University, San Marcos – PM Training.*

**Project Highlight:** *National Veterans Transition Services Inc, AKA REBOOT – Custom PM Foundations Training.*



**We are a Certified Registered Educational Provider (R.E.P.) with the Project Management Institute.**

Our Founder along with many of our staff members have been volunteer leaders within the local Project Management Institute (PMI) Chapters, remain steadfast PMI process advocates for our clients, and are amazing educators and public speakers. Our company's operational principals are executed as a Program Management Office (PMO) structure and it is this commitment to this process, coupled with the firm's firm belief in the true business value of Project Management that motivates our team to deliver amazing training courses.



**TITANIUM COBRA**  
SOLUTIONS